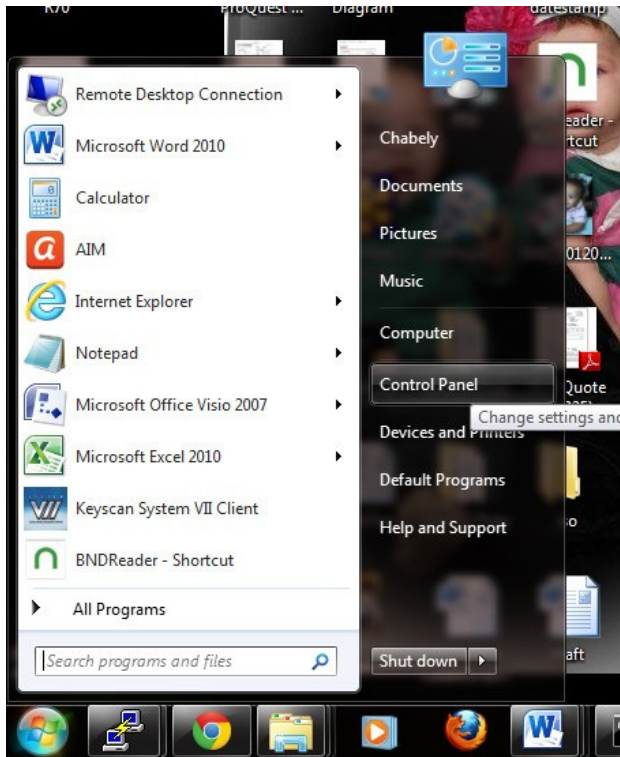


Connecting to VPN from windows 7

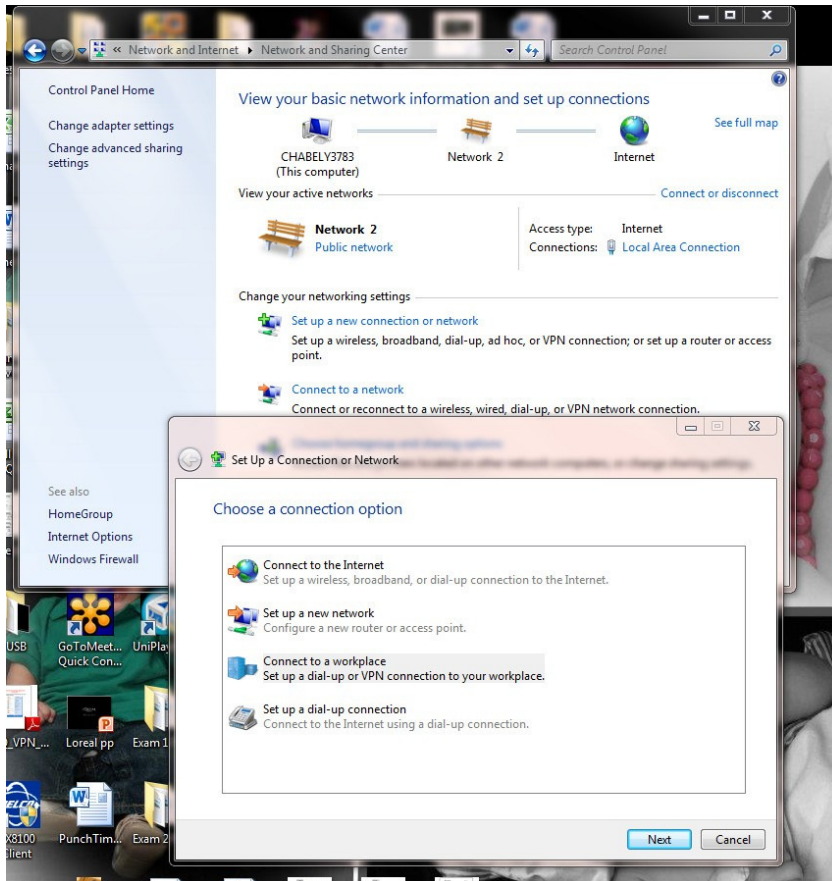
Connecting to VPN (initial setup):

1. Go to the start button and click on control panel:



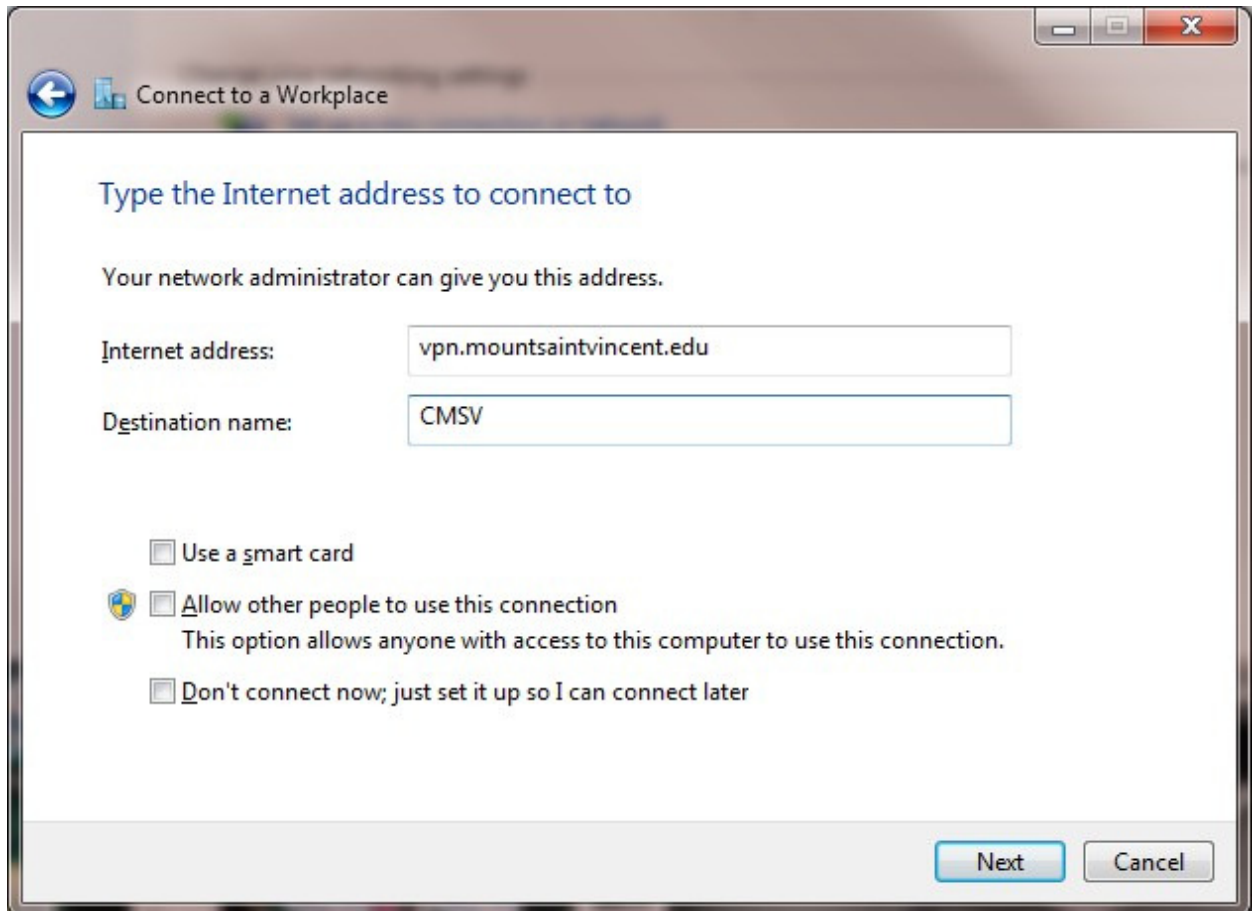
2. Then click on "View network status and tasks" (under Network and Internet)
3. Then click "Set up a new connection or network"

4. On the next window, click on “Connect to a work place”, and then click next



5. Click on “Use my Internet connection (VPN)”

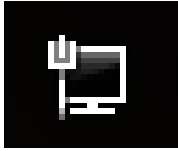
6. Internet address: vpn.mountsaintvincent.edu and destination name: CMSV and click next:



7. The username and password are the same as your e-mail account. Enter the information and click next.

8. You should now be connected.

Note: After the initial connection you will be able to connect by clicking on the following symbol (located in the lower, right hand side of your desktop):



And then click on CMSV and connect:

